

LAKE COUNTY FOLK CLUB

* DECEMBER

2018

02

No Club Event

pet your dog on
NATIONAL MUTT DAY

09

Open Stage

hosted by
SCOTT ENGSTROM

16

Concert Stage

featured artist
KERRY PATRICK CLARK

23

Song Circle

hosted by
JUDI Z

UPCOMING CONCERT STAGE / DECEMBER 16

KERRY PATRICK CLARK

Former member of The New Christy Minstrels, **Kerry Patrick Clark** is oft referred to as a “musical Norman Rockwell.” An expert musician, an award-winning songwriter, and a beloved performer who’s transformed audiences all across the country — KPC is a blend of the practical and the visionary. And he’s a mixture of genres and time periods: today and yesterday, pop, folk, country, singer/songwriter, Americana. Mostly, he is solidly and quintessentially rooted in his own life experiences, which somehow magically deepen and reverberate through ours as well.

Kerry is a masterful entertainer. His performances are a powerful, deeply personal, resonant experience, and those who are lucky enough to catch him in concert, leave a different person. Make sure you are one such person on December 16th at the Grayslake Heritage Center!

* OPENING: DAN SYLVESTER

Getting the evening off on the right (cowboy-boot-clad) foot will be Ramblin’ Dan Sylvester. With a voice as deep and cool as the Rio Grande, Dan reinvigorates songs of classic western swing, depression-era standards, and gold-dust-covered waltzes from a bygone age. A strong, laid-back rhythm on guitar makes for the perfect companion, as he coaxes us to amble over canyon and prairie.



EVENTS

Sundays at 7PM

OUR LOCATION! ←

Grayslake
Heritage Center

164 Hawley Street
Grayslake, IL
[Link to Map >](#)

CONCERT ADMISSION

General	\$18
Senior	\$15
Members	\$13

Doors open at 6:00PM for
all concert performances.

CONCERT RESERVATIONS

847.602.8882

Please text or call before noon
on the Sunday of the show.

JANUARY EVENTS

BLUEGRASS JAM JAN 06

Join us from 7:00-9:00PM Host: **Scott Engstrom**

OPEN STAGE JAN 13

Sign-up at 6:30PM Host: **Scott Engstrom**

CONCERT STAGE JAN 20

Artist: **Bryan Bowers** Opener: **Jack Kennedy**

SONG CIRCLE JAN 27

Join us from 7:00-9:00PM

UPCOMING EVENTS

Lee Murdock *"The Irish in America"* MAR 17

Briar Road with guests **Don Stiernberg** MAR 31
& **Louise Brodie** — *Dan Zahn Birthday Concert*

DON'T FORGET TO RENEW YOUR LCFC MEMBERSHIP

Check your membership status at any club event.

Become a Member or Volunteer

2017 MEMBERSHIP

Individual \$20

Family \$30

Only members are chosen as opening acts for the featured performers of our Concert Series.

Please inquire at any of our events about becoming a member. We appreciate your support!

VOLUNTEER

All of the work involved in our concerts (*booking, promotions, venue equipment set-up and tear-down*) is performed by our loyal volunteers.

Please consider volunteering your time and energy. Just mention that you'd like to at any LCFC event.

UPCOMING CONCERT STAGE / JANUARY 20

BRYAN BOWERS

For over four decades, **Bryan Bowers** has been to the autoharp what Earl Scruggs was to the five-string banjo. From his rather unglamorous beginning as a Seattle street singer in the early 70s, Bryan has become a truly major artist on the traditional music circuit and a must-see entertainer.

His **instrumental virtuosity** combined with his warmth, eloquence, expression and professionalism puts Bowers in the rarified company of luminaries like Chet Atkins, David Grisman, Itzhak Perlman, and Tony Rice.

In addition to redefining the autoharp, he's also well known as a wonderful singer and skillful songwriter. Bryan has a dynamic outgoing personality and an uncanny ability to enchant a crowd in practically any situation. **This concertlink at the LCFC is not to be missed!**

★ OPENING: JACK KENNEDY

Opening the evening's concert will be folk club member **Jack Kennedy**, a personality-rich songwriter/storyteller who shares a great deal with Mark Twain—the wily and witty intellect, the colloquial humor, the deft character sketches, not to mention the supremely impressive mustache. Jack's lyrics will keep you on your toes, and his melodies will have you tapping them.

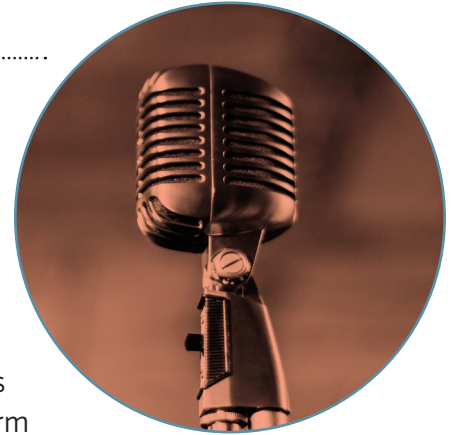


Open Stage / Second Sundays

The second Sunday of each month is our Open Stage night, hosted by Scott Engstrom. Come out and enjoy some great local musical talent! Non-performing listeners are always encouraged and will be pleasantly surprised with the diverse musical styles represented. There's a little something for everyone.

Anyone who would like to perform is encouraged to do so.

You'll never find a more supportive audience than at the LCFC. Sign-up begins at 6:30 PM and the music starts at 7:00. Each performer is allowed up to two songs spanning about 10 minutes. If time permits—and it often does—artists can perform an additional song near evening's end. (suggested \$3 donation)



Song Circle / Fourth Sundays

On the fourth Sunday of each month we hold our Song Circle. Members and non-members are always welcome. Come out to sing, play, or just listen.

Marcia Krieger, along with other members of the LCFC, hosts our Song Circle. It's a casual opportunity to kick back, play some music and meet others. Participants form a circle and each one in turn can choose to play a song or pass. It's a chance to lead songs or to join in with others. We keep moving around the circle until it's time to call it a night. (suggested \$3 donation)



Behind the Song / Check Schedule

We are thrilled to (occasionally) present a special Behind the Song concert, hosted by Chuck VanderVennet. These unique events are an intimate exploration of the personal craft of songwriting from one artist's perspective.

Entertainment and inspiration.

Part concert, part interview, Chuck speaks candidly with the featured artist, and deftly exposes the backstory underlying song origins, stylistic choices, and the process of songwriting. Chuck also provides an opportunity for audience interaction, voicing any burning questions attendees might have. These are inspirational evenings for any music lover.



Our Venues



Grayslake Heritage Center

The Grayslake Heritage Center located at 164 Hawley Street in downtown Grayslake is our home for the majority of club events, including **Open Stage, Song Circle and most concerts**. This intimate space in a building rich with history and warmth of community is in perfect alignment with the folk music tradition we proselytize at our club events.

The **Grayslake Heritage Center & Museum** has become well known for assembling and displaying a wide variety of fascinating exhibits centered on Grayslake history. And we are part of that rich history! The Lake County Folk Club was founded in **October 1991 at the Last Chance Saloon** in downtown Grayslake.



MAP TO GHC >
164 HAWLEY STREET



Grayslake Village Hall

The LCFC is very excited to occasionally host some concerts at the beautiful Grayslake Village Hall theater space. We will make it clear in which performances will take place at this venue—just **look for the icon on the left** in concert listings.

The Village Hall is located at 10 South Seymour Avenue in downtown Grayslake, just west of the railroad tracks, and just a couple of blocks away from our typical venue, the Heritage Center.



MAP TO GVH >
10 S SEYMOUR AVENUE

*Light refreshments will be available during events, and the Grayslake community offers **many dining options** for those who want to eat before the music.*

EMAIL: THELAKECOUNTYFOLKCLUB@YAHOO.COM

RESERVATIONS: (847) 602-8882

WE'RE YOUR FOLK CLUB!

Music for the people, by the people.

JOIN THE CLUB, RENEW YOUR MEMBERSHIP OR SEND A DONATION

I/We wish to (check one): ☐ Join ☐ Renew Date _____

Membership Type: ☐ Individual \$20.00

☐ Family \$30.00

\$_____ Additional Donation

\$_____ Total Amount Enclosed

Please make checks payable to: The Lake County Folk Club *(Please do not send cash)*

Mail to: The Lake County Folk Club • PO Box 847 • Mundelein, IL • 60060-0847

The Lake County Folk Club is a tax exempt 501(c)3 Not For Profit Corporation

E-mail: _____

Name(s): _____

Address: _____

City: _____ Zip: _____

Phone: (day) _____ (evening): _____

To subscribe to the monthly e-newsletter please email thelakecounttyfolkclub@yahoo.com